

TarraWarra Museum of Art announces 2021 program

***TarraWarra Biennial 2021, Sidney Nolan,
Heather B. Swann, and WILAM BIIK***



Jeremy Bakker, *Hands in the Dark* 2017 (video still), single-channel video, video duration 00:07:20 looped, Courtesy of the artist.

TarraWarra Museum of Art's 2021 exhibition program will include the TarraWarra Biennial 2021, curated by Nina Miall; a major new Sidney Nolan exhibition dedicated to his explorations of myth from the Trojan War to Gallipoli; an immersive installation by Heather B. Swann; and TarraWarra's first Yalingwa exhibition, *WILAM BIIK*, engaging concepts of Indigenous lore.

Victoria Lynn, Director, TarraWarra Museum of Art, says 2021 will feature groundbreaking exhibitions complemented with a series of specially curated public programs.

'One of the few benefits of the COVID lockdown has been the time it has afforded for detailed research and planning. I think this will shine through for our visitors in 2021, with a program that expands the Museum's focus on providing a relevant and meaningful voice and presenting new and unexpected ideas within a global context,' said Ms Lynn.

MEDIA RELEASE

9 February 2021

TARRAWARRA
MUSEUM
OF ART

The TarraWarra Biennial 2021: *Slow Moving Waters*, 27 March - 11 July 2021, guest curated by Nina Miall, will feature 24 artists from across the country with new works that explore ideas of slowness, deceleration, drift and the elasticity of time.

WILAM BIIK, 31 July – 7 November 2021, curated by Yalingwa First Nations Curator Stacie Piper, is an exhibition of cultural consciousness and knowledge; of an unsevered connection between First Peoples of South East Australia and their Country, over thousands of generations. *WILAM BIIK* is the second exhibition to be presented as part of Yalingwa, a partnership between the Victorian Government, ACCA and TarraWarra Museum of Art, designed to support the development of outstanding contemporary Indigenous art and curatorial practice.

Sidney Nolan: Myth Rider, 20 November 2021 – 6 March 2022, curated by TarraWarra Museum of Art Curator Anthony Fitzpatrick, brings together more than 100 works by Sidney Nolan from the period 1955–1966, during which the artist grappled with the subject of the Trojan War, its parallels with the Gallipoli campaign, and its origins in the myth of Leda and the Swan.

The Nolan exhibition will be paired with an immersive installation by contemporary artist Heather B. Swann, based on her interpretation of the myth of Leda and the Swan, titled *Heather B. Swann: Leda and the Swan*, 20 November 2021 – 6 March 2022.

TarraWarra's current exhibition, the critically acclaimed *Looking Glass: Judy Watson and Yhonnie Scarce*, curated by Hetti Perkins, continues until 8 March 2021.

Take a day trip to see the exhibition and experience some of the additional activities on offer at TarraWarra Museum of Art. Free sketching kits are available at the Museum where you can relax on the grassy banks and hone your sketching skills in the glorious surrounds of TarraWarra as part of the Museum's [DIY Summer Sketching](#) program. Or, follow the [Looking Glass Trail](#), a self-guided itinerary to open your eyes, ears and minds to the Indigenous history of the Yarra Valley region. Tune into a playlist curated by *Looking Glass* artists Judy Watson and Yhonnie Scarce, visit an art project on the banks of the Birrarung (Yarra River) in Healesville and take a virtual visit to Coranderrk Aboriginal Station, one of Australia's most significant sites.

'We look forward to welcoming visitors new and old to TarraWarra Museum of Art throughout 2021,' said Ms Lynn.

ENDS

For interviews, images and further information please contact:

Katrina Raymond | 03 9663 3222 | 0417 303 158 | katrina@medialinkproductions.com

Elisabeth Alexander | 03 5957 3101 | 0404 934 779 | elisabeth@twma.com.au

High resolution images available [here](#)

TarraWarra Museum of Art, 313 Healesville-Yarra Glen Road, Healesville VIC 3777

T +61 (0)3 5957 3100 W twma.com.au

Opening Hours: Tuesday – Sunday, 11am to 5pm. Open all public holidays except Christmas Day. Open 7 days a week throughout January.

2021 EXHIBITIONS



Jacobus Capone

Sincerity and Symbiosis 2019 (video still detail)
synchronised 3-channel HD video with sound
video duration 00:36:00

Courtesy of the artist and Moore Contemporary, Perth

TarraWarra Biennial 2021: *Slow Moving Waters*

27 March - 11 July 2021

Curator: Nina Miall

Taking the meaning of ‘Tarrawarra’—a Woiwurrung word that translates approximately as ‘slow moving waters’—as its departure point, the TarraWarra Biennial 2021 explores ideas of duration, suspension, withdrawal, stillness and the elasticity of time.

Against the backdrop of the hyper-accelerated rhythm of modern life, characterised by the relentless hum of instantaneous communications and a 24-hour news cycle, the artworks featured in this exhibition mark a very different sort of time—one which connects with deeper geological and cosmic currents, or to natural cycles and rhythms—seeking to restore a deep-rooted connection to land and earth, to ancient knowledge and to long-forgotten lore.

Featuring 24 artists from across the country and a number of new site-specific installations, the TarraWarra Biennial 2021 considers the broader arc of history against the pull of the accelerated now, attentive to notions of place, subjectivity and community, and to an idea of the present as a site of multiple durations, pasts and possible futures.

THIS PROJECT HAS BEEN ASSISTED BY THE AUSTRALIAN GOVERNMENT THROUGH THE AUSTRALIA COUNCIL, ITS ARTS FUNDING AND ADVISORY BODY



RESTART INVESTMENT TO SUSTAIN AND EXPAND (RISE) FUND – AN AUSTRALIAN GOVERNMENT INITIATIVE



SUPPORTED BY



THIS PROJECT IS SUPPORTED BY THE QUEENSLAND GOVERNMENT THROUGH ARTS QUEENSLAND



PUBLIC PROGRAMS SUPPORTED BY



CAITLIN FRANZMANN'S 'TO THE CURVE OF YOU' HAS BEEN CO-COMMISSIONED WITH THE INSTITUTE OF MODERN ART, BRISBANE





Paola Balla
Collecting Plants With Mum 2020
Wemba Wemba, Gunditjmara

WILAM BIIK

31 July – 7 November 2021

Curator: Stacie Piper

In the Woiwurrung language of the Wurundjeri people, Wilam Biik means Home Country.

How do we see Country? How do we listen to Country? How do we connect to Country?

Wilam Biik is the Soil, the Land, the Water, the Air, the Sky and the Animals that reside within. It is the only home we know, and we honour it for its sacred exchange. A home where Custodial rights and responsibilities never left.

An exhibition of cultural consciousness and knowledge, of an unsevered connection between First Peoples of South East Australia and their Country, over thousands of generations.

WILAM BIIK is the second exhibition to be presented as part of Yalingwa, a Victorian Government initiative. Yalingwa is a partnership between the Victorian Government, ACCA and TarraWarra Museum of Art, designed to support the development of outstanding contemporary Indigenous art and curatorial practice. It includes three new curatorial positions and three major exhibitions alternating between ACCA and TarraWarra Museum of Art, focused on new commissions by contemporary Indigenous artists.

PRESENTING PARTNER



PARTNER



SUPPORTED BY



MEDIA RELEASE

9 February 2021

TARRAWARRA
MUSEUM
OF ART



Sidney Nolan

The Myth Rider 1958–59

polyvinyl acetate on composition board

122 x 152 cm

Private Collection

© The Trustees of the Sidney Nolan Trust / Bridgeman Images

Copyright is now managed by the Copyright Agency

Photo © Agnew's, London / Bridgeman Images

Sidney Nolan: Myth Rider

20 November 2021 – 6 March 2022

Curator: Anthony Fitzpatrick

Developed by TarraWarra Museum of Art, *Sidney Nolan: Myth Rider* brings together more than 100 works by Sidney Nolan from the period 1955–1966, during which the artist grappled with the subject of the Trojan War, its parallels with the Gallipoli campaign, and its origins in the myth of Leda and the Swan.

Throughout these interconnected series, Nolan employs his remarkable visual and mental acuity to meld classical allusions, literary sources, historical references, and his own personal response to war and its disastrous consequences, to convey a series of powerful insights into the broader mythic and universal dimensions of human conflict. Combining compelling subject matter and a highly inventive approach to a wide range of media, the rich array of works in this exhibition reveal Nolan's innate understanding of and facility for mythopoesis—the making of myth—whereby past and present, ancient and modern, legend and history are conflated and vividly reimagined.

Although exhibitions of Nolan's *Gallipoli* series have highlighted his references to classical sources, this will be the first exhibition to show these works in the context of the development of the artist's vision of the tragedy of warfare from his early works on Hydra (1955–56), through his *Leda and Swan* series (1958–60), and culminating in his large scale statements on Greek mythology (1966).



Heather B. Swann

Waterfall 2019

ink and wash on paper

70 x 102.5 cm

Courtesy of the artist

Photo: Brenton McGeachie

Heather B. Swann: Leda and the Swan

20 November 2021 – 6 March 2022

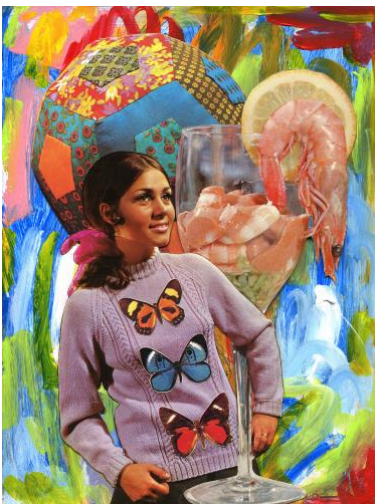
Curator: Anthony Fitzpatrick

Heather B. Swann: Leda and the Swan is an exhibition of new sculptures and paintings by Canberra-based contemporary artist Heather B. Swann, who is renowned for her large-scale, meticulously crafted and highly expressive sculptural forms.

Swann's new installation at TarraWarra Museum of Art is an immersive, experiential work, woven out of her own contemporary reading of the myth of Leda and the Swan and emerging from artist residencies in Rome and Athens. The artist's close study of Graeco-Roman antiquities and emulation of the forms of classical figurative sculpture is embodied in her use of fragmentation, repetition and mismatched scale.

Taking its name from the story of Leda and the Swan, the work invites audiences to explore the actions, emotions and social-moral codes of this ancient, ambiguous and chilling narrative. At the same time, the work recognises and salutes the historical achievement (and presence in the adjacent gallery spaces) of Sidney Nolan, Australia's great modernist myth-maker.

2021 PUBLIC PROGRAM HIGHLIGHTS



Minna Gilligan

Miss you Miss California Miss World Miss Universe 2020

acrylic and collage on found image Courtesy the artist and Daine Singer

Open Weekend 2021 13 & 14 February 2021

TarraWarra Museum of Art's Open Weekend returns in 2021, with two days of free Museum entry, a major outdoor installation by Minna Gilligan and a free tote bag printmaking workshop with local artist Bronwyn Ward! [Bookings essential](#) to manage capacity and keep the event COVIDSafe.

PROUDLY SUPPORTED BY

