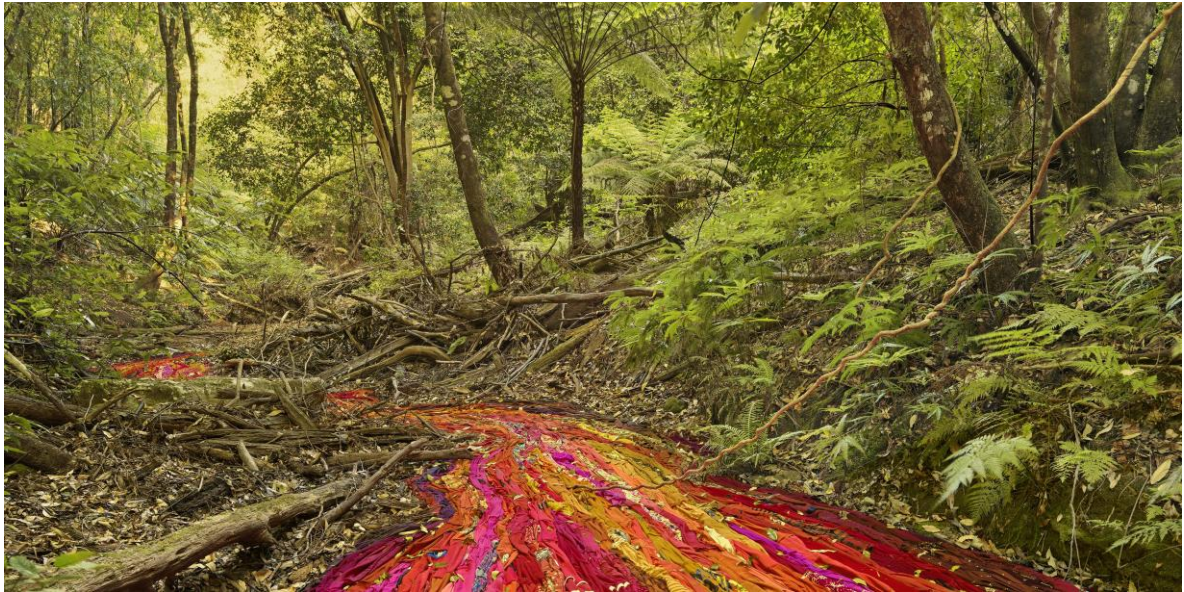


Rosemary Laing

Curated by Victoria Lynn

2 December 2017 – 11 February 2018



Rosemary Laing, *The Flowering of the Strange Orchid* 2017, from the series *Buddens*, archival pigment print, 100 x 200 cm
Ten Cubed Collection, Melbourne © Rosemary Laing, Courtesy Tolarno Galleries, Melbourne

TarraWarra Museum of Art will stage an exhibition of the works of Rosemary Laing, one of Australia's most significant and internationally-renowned photo-based artists, 2 December 2017 – 11 February 2018.

Focusing on the theme of land and landscape in Laing's oeuvre, the **Rosemary Laing** exhibition includes 28 large scale works selected from 10 series over a thirty-year period.

The exhibition, which is the first large-scale showing of Laing's work in Victoria, will be accompanied by an exhibition of works by Fred Williams focusing on a single year of the artist's oeuvre, **Fred Williams – 1974**. Curated by Anthony Fitzpatrick, the Williams exhibition reveals the ways in which colour and human intervention in the landscape became a focus for the artist.

Born in Brisbane and based in Sydney, Laing has worked with the photographic medium since the mid-1980s. Her projects have engaged with culturally and historically resonant sites in the Australian landscape, as well as choreographed performances.

PRINCIPAL
SPONSOR



MAJOR EXHIBITION
PARTNER



PUBLICATION
PARTNER



MAJOR
SPONSORS

Arnold Bloch Leibler
Lawyers and Advisers

PROBUILD

MAJOR
PARTNERS

paolismith
CREATIVE



RACV Club

MEDIA RELEASE

October 18, 2017

TARRAWARRA
MUSEUM
OF ART

TarraWarra director, Victoria Lynn, curator of the exhibition, says Laing's work is highly representative of the Museum's central interest in the exchange between art, place and ideas.

"This exhibition reveals Laing's compositional and technical ingenuity. It shows that Laing can create images of dazzling luminosity as well as solemnly subdued light. Flickers of bright red catch our eye, while passages of verdant greens create an all-over intensity. Her images take us to open and infinite plains as well as the depths of entangled forest trails.

"The artist builds structures and installations in coastal, farming, forest and desert landscapes from which she then creates photographic images. Whether it is papering the floor of a forest in the 2013 series *The Paper*, or creating a river of clothes displacing the water of a flowing creek in the new series *Buddens 2017*, Laing's images reflect upon the historical and contemporary stories of human engagement with our continent. More specifically, the artist draws on colonisation and the impact of waves of asylum seekers, suggesting that the landscape is forever transformed both physically and metaphorically. The exhibition also includes works depicting the aftermath of fire, and the ways it too transforms what we thought we knew of the landscape," Ms Lynn said.

Rosemary Laing comments: "The arrival of people, throughout history, shifts what happens in land, challenging those who have left their elsewhere, and disrupting the continuum of their destination-place. A disruption causes a reconfiguration. It elaborates both the beforehand and the afterward. The works are somewhere between – a narrative for the movement of people, the condition of landforms with a changing peopled condition, expectations of home and haven, flow and flooding, and the effect and affect of these passages".

The exhibition is supported by major exhibition partner the Balnaves Foundation, and will be accompanied by a catalogue authored by Judy Annear, funded by the Gordon Darling Foundation.

Annear, writes: "How to make sense of what humanity does in and to their environment regardless of whether that environment appears to be natural or made? What is the spectrum, the temperature of that activity? Laing is an artist who grapples with these questions and how to reflect and interpret the times in which she lives."

Neil Balnaves AO, Founder The Balnaves Foundation said, "The exhibitions *Rosemary Laing* and *Fred Williams – 1974* will be the third year that The Balnaves Foundation have supported the TarraWarra Museum of Art to deliver exhibitions of note by Australian artists. The Foundation is proud to partner in these major endeavours, providing vital opportunities for important Australian artists to be showcased, whilst providing art lovers – including inner-regional audiences – access to outstanding arts experiences."

Laing has exhibited in Australia and abroad since the late 1980s. She has participated in various international biennials, including the Biennale of Sydney (2008), Venice Biennale (2007), Busan Biennale (2004), and Istanbul Biennial (1995). Her work is present in museums Australia-wide and international museums including: the Museo Nacional Centro De Arte Reina Sofia, Madrid; North Carolina Museum of Art, Raleigh; Modern Art Museum of Fort Worth, USA; 21st Century Museum of Contemporary Art, Kanazawa, Japan;

PRINCIPAL
SPONSOR



MAJOR EXHIBITION
PARTNER



PUBLICATION
PARTNER



MAJOR
SPONSORS

Arnold Bloch Leibler
Lawyers and Advisers

PROBUILD

MAJOR
PARTNERS

paolismith
CREATIVE



MEDIA RELEASE

October 18, 2017

TARRAWARRA
MUSEUM
OF ART

Kunstmuseum Luzern, Lucerne, Switzerland; Wadsworth Atheneum Museum of Art, Hartford, Connecticut, USA.

Laing has presented solo exhibitions at several museums, including the Museum of Contemporary Art, Sydney; Kunsthallen Brandts Klædefabrik, Odense; Domus Artium 2002, Salamanca; Frist Center for the Visual Arts, Nashville; and National Museum of Art, Osaka. A monograph, written by Abigail Solomon-Godeau has been published by Prestel, New York (2012).

ENDS.

To arrange interview with Victoria Lynn or for supply of images please contact:

Katrina Raymond, MediaLink Productions, (03) 9663 3222, 0417303 158 katrina@medialinkproductions.com
Louis Raymond, MediaLink Productions, (03) 9663 3222, 0448808811 louis@medialinkproductions.com

TarraWarra Museum of Art, 311 Healesville-Yarra Glen Road, Healesville, Victoria, Australia
T +61 (0)3 5957 3100 <http://www.twma.com.au/exhibition/rosemary-laing/>

Opening Hours:

Tuesday – Sunday, 11am to 5pm. Open all public holidays except Christmas Day.

Open 7 days a week from Boxing Day to Australia Day.

Exhibition Admission: \$12.00 Adults; \$10.00 Seniors; \$8.00 Pensioners and Students; Children 12 and under free.



Rosemary Laing, *Aristide* 2010, from the series *leak*, C Type photograph, 110 x 223 cm
The University of Queensland Art Museum, Brisbane Collection of The University of Queensland, purchased 2011
© Rosemary Laing, Courtesy Tolarno Galleries, Melbourne

PRINCIPAL
SPONSOR



MAJOR EXHIBITION
PARTNER



PUBLICATION
PARTNER



MAJOR
SPONSORS

Arnold Bloch Leibler
Lawyers and Advisers

PROBUILD

MAJOR
PARTNERS

paolismith
CREATIVE



RACV Club